



Hot Water Circulator Pumps

Made in Taiwan



Catalogo 50/60 Hz.

HW and HH and HWS series

Hot water pumps constitute a complete range of 3-speed circulator pumps, available both in 50 and 60 Hz. The pumps can be used in both open and closed systems.

HH & HW pumps are of the canned-motor type, i.e. pump and motor form an integral unit without a shaft seal and with only two ceramic bearing for sealing. The bearings are lubricated by the pumped liquid.

Applications

Hot water circulator pumps are designed for circulation of liquids in heating and air-conditioning systems. Examples of typical applications are:

- One- and two-pipe heating systems
- Main pumps
- Zone pumps
- Boiler shunt pumps
- Pumps for heating surfaces
- Calorifiers
- Underfloor heating systems
- Solar heating systems
- Heat pump systems
- Geothermal heating systems
- Heat recovery systems
- Two-pipe air-conditioning systems
- Pumps for refrigeration units.

Features and benefits

- Low noise
- Low energy
- Available with corrosion-resistant stainless steel pump casing
- High volume of water
- Easy to installation

Optional Accessories

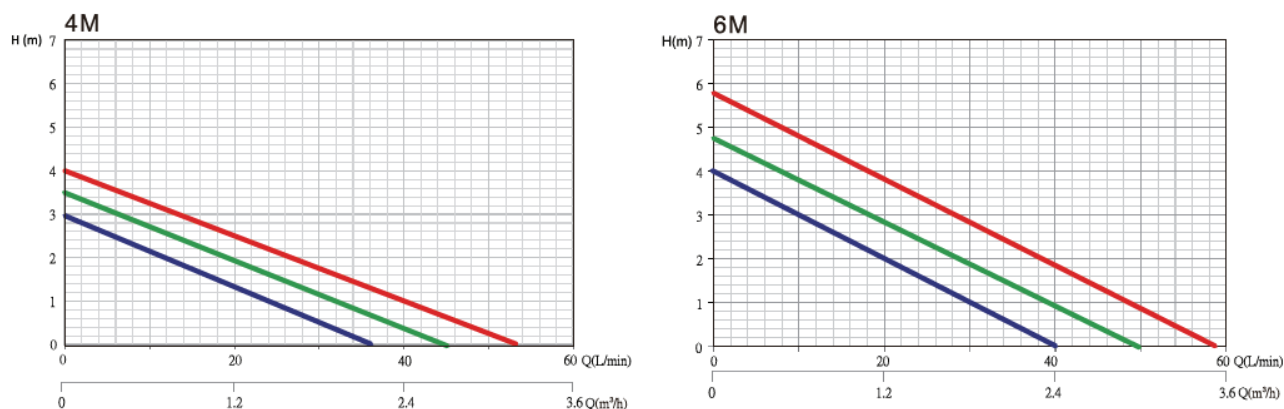


Plastic Base

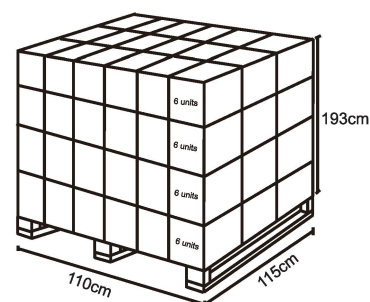
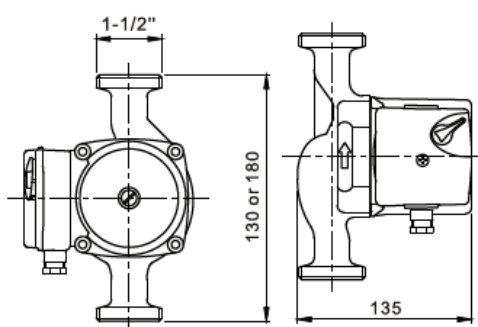


Hot Water Circulator Pumps

Performance Curves



Product and Dimensions



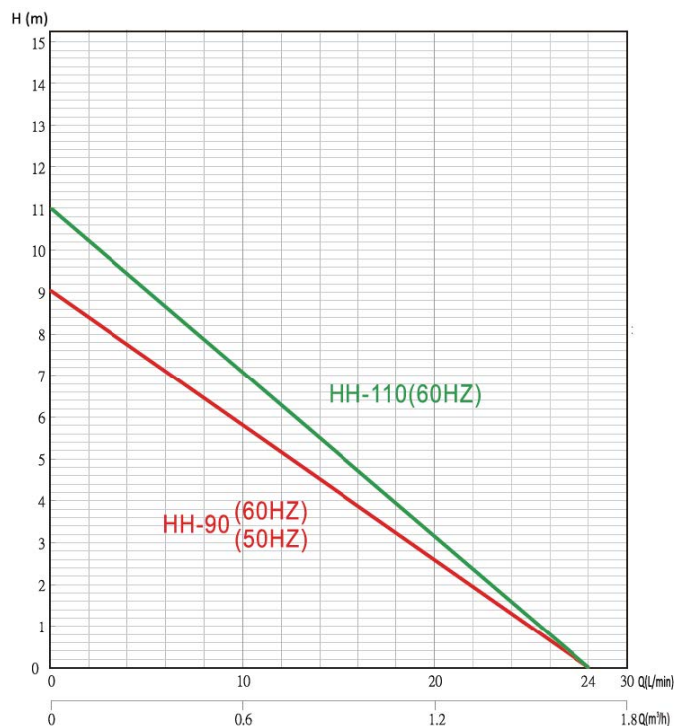
Technical Specification

Model	HZ	Phase	Voltage	Power	Head	Flow	Current	input/output	Weight	Carton per pallet	Pallet size
HW-25-4 0-130	50	1 Ph.	220V-240V	62.4/53.7/43.7	4	3.2	0.27	1-1/2"	2.3	6	60
HW-25-40-180	50	1 Ph.	220V-240V	62.4/53.7/43.7	4	3.2	0.27	1-1/2"	2.6	6	60
HW- 25-6 0-130	50	1 Ph.	220V-240V	73.5/59.7/46.6	6	3.5	0.32	1-1/2"	2.3	6	60
HW-25-60-180	50	1 Ph.	220V-240V	73.5/59.7/46.6	6	3.5	0.32	1-1/2"	2.6	6	60

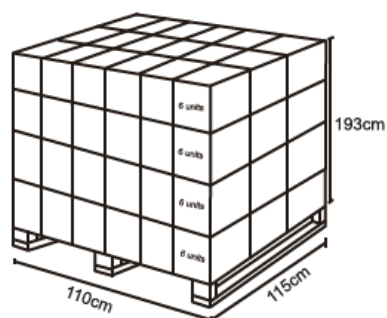
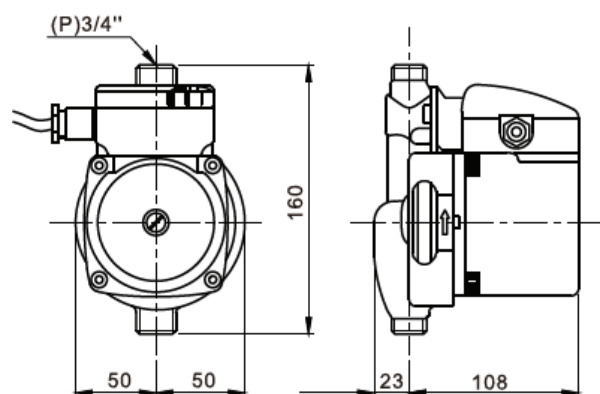
Model	HZ	Phase	Voltage	Power	Head	Flow	Current	input/output	Weight	Carton per pallet	Pallet size
HW-25-60-130	60	1 Ph.	110V	80.0/65.0/50.0	6	3.5	0.37	1-1/2"	2.3	6	60
HW-25-6 0-180	60	1 Ph.	110V	80.0/65.0/50.0	6	3.5	0.37	1-1/2"	2.6	6	60
HW-25-6 0-130	60	1 Ph.	110V	80.0/65.0/50.0	6	3.5	0.73	1-1/2"	2.3	6	60
HW- 25-60-180	60	1 Ph.	110V	80.0/65.0/50.0	6	3.5	0.73	1-1/2"	2.6	6	60

Mini Booster Pumps

Performance Curves



Product and Dimensions

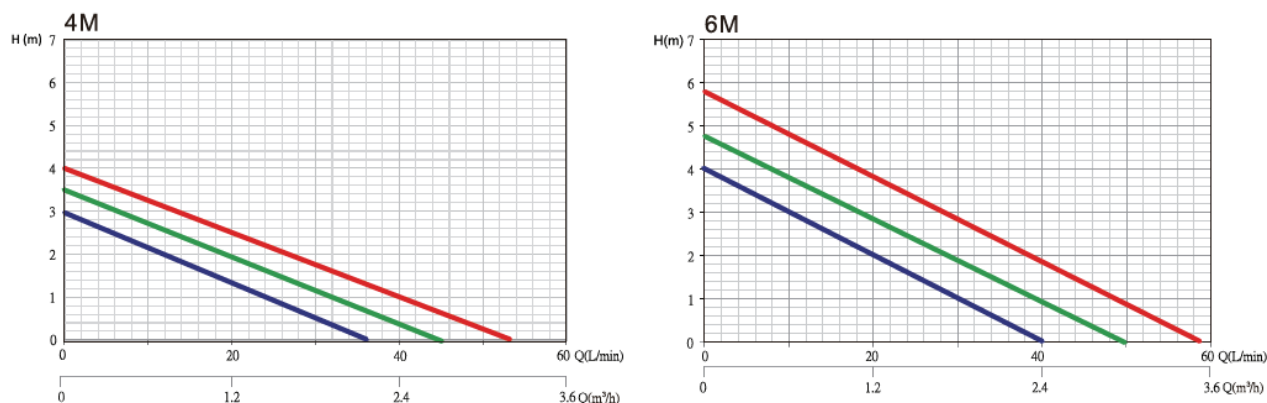


Technical Specification

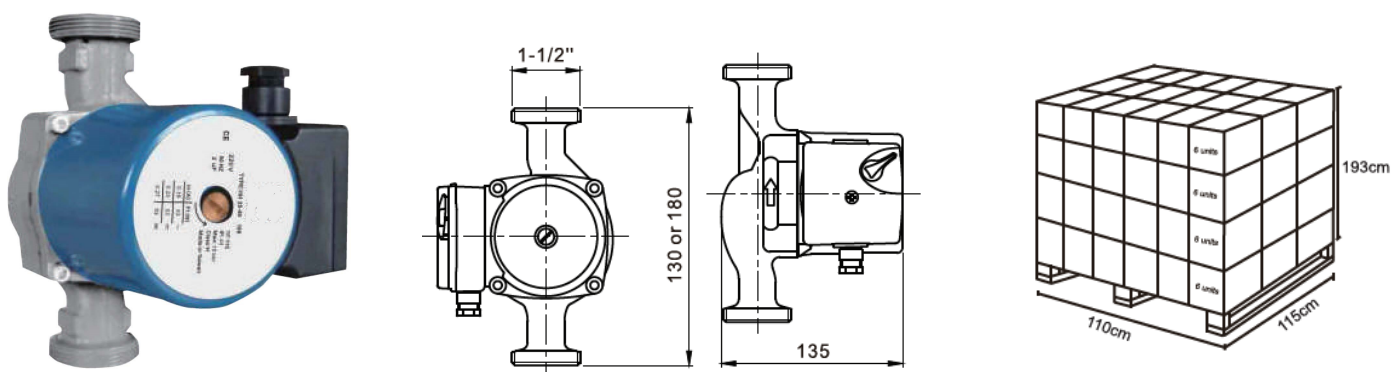
Model	HZ	Phase	Voltage	Power	Head	Flow	Current	Input/output	Weight	Carton per pallet	Pallet size
HH-15-90-160	50	1 Ph.	220-240V	110	9	1.5	0.5	3/4"	2.5	6	60
HH-15-90-160	60	1 Ph.	110V	110	9	1.5	1	3/4"	2.5	6	60
HH-15-90-160	60	1 Ph.	110V	110	9	1.5	0.5	3/4"	2.5	6	60
HH-15-110-160	60	1 Ph.	110V	120	11	1.5	0.5	3/4"	2.5	6	60
HH-15-110-160	60	1 Ph.	110V	120	11	1.5	1.05	3/4"	2.5	6	60

Stainless Steel Hot Water Circulator Pumps

Performance Curves



Product and Dimensions



Technical Specification

Model	Hz	Phase	Voltage	Power	Head	Flow	Current	input/output	Weight	Carton per pallet	Pallet size
HWS-25-40-130	50	1 Ph.	220V-240V	62.4/53.7/43.7	4	3.2	0.27	1-1/2"	2.3	6	60
HWS-25-40-180	50	1 Ph.	220V-240V	62.4/53.7/43.7	4	3.2	0.27	1-1/2"	2.6	6	60
HWS-25-60-130	50	1 Ph.	220V-240V	73.5/59.7/46.6	6	3.5	0.32	1-1/2"	2.3	6	60
HWS-25-60-180	50	1 Ph.	220V-240V	73.5/59.7/46.6	6	3.5	0.32	1-1/2"	2.6	6	60

Model	Hz	Phase	Voltage	Power	Head	Flow	Current	input/output	Weight	Carton per pallet	Pallet size
HWS-25-60-130	60	1 Ph.	110V	80.0/65.0/50.0	6	3.5	0.37	1-1/2"	2.3	6	60
HWS-25-60-180	60	1 Ph.	110V	80.0/65.0/50.0	6	3.5	0.37	1-1/2"	2.6	6	60
HWS-25-60-130	60	1 Ph.	110V	80.0/65.0/50.0	6	3.5	0.73	1-1/2"	2.3	6	60
HWS-25-60-180	60	1 Ph.	110V	80.0/65.0/50.0	6	3.5	0.73	1-1/2"	2.6	6	60